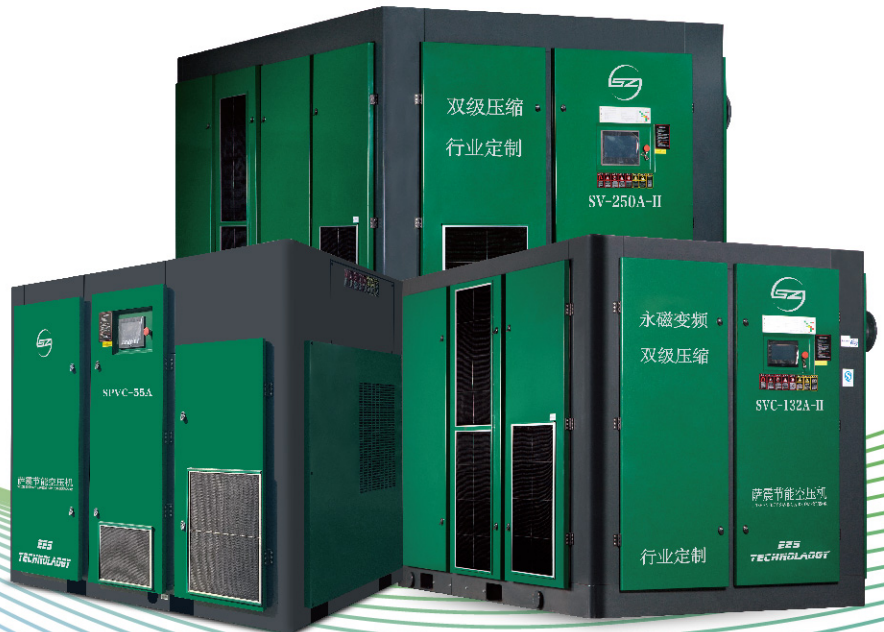


# Oil Free Screw Blower

Industry Customized  
Average Saving **20-30%**



# COMPANY PROFILE

## About Seize Compressor



### **SEIZE COMPRESSOR (SHANGHAI) CO., LTD**

was founded in 2009, registered in Shanghai, China, is a Sino foreign joint venture of air compressor manufacturer with integrating r&d, manufacturing and marketing, capable of producing 100,000 sets of machines a year.

Our products have sold to more than 20 countries in the world with highly praised and trusted.

At the same time the product is famous for its high reliability, energy saving and low noise.

Seize has been dedicated to research and development in the field of air compressor, the response to the global low-carbon theme, leading the air compressor industry in energy conservation and environmental protection, we have the worlds most accurate three coordinates measuring instrument which located in the r&d center of Europe,



*Market first, perfection and energy saving,  
Seize—your best partner of compressed air system solutions!*

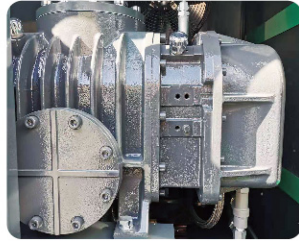
and special machine and grinding machine for special purpose, in order to ensure the core technology research and development of a breakthrough. Our energy-saving air compressors developed by Seize which keeps the leading position in this field and saves energy 30% or more.

Seize is a professional air compressor manufacturer, we provide permanent magnet frequency conversion air compressor, oil free air compressor, piston compressor, portable compressor, high pressure air compressor, low pressure air compressor, etc. At present, our manufacturing base is in Shanghai, China and we have more than 30 sales-service offices which can provide users with professional sales and service support in time.

# Industry Customized - Oil Free Screw Blower Features and Advantages

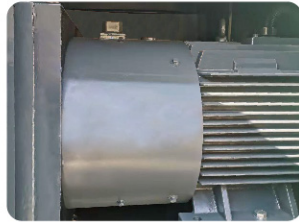
01

- Adopt dry type oil-free compression Air end, the compression process is 100% oil-free
- Screw type rotors with super-coating, high compression accuracy, low noise and long life
- Compared with roots blower, the efficiency is average increased by 20-30%



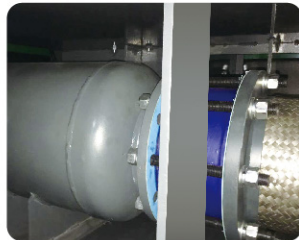
02

- Motor adopt IE4 efficiency permanent magnet motor, protection class IP54 / 55 frequency, average savings of 3-5%



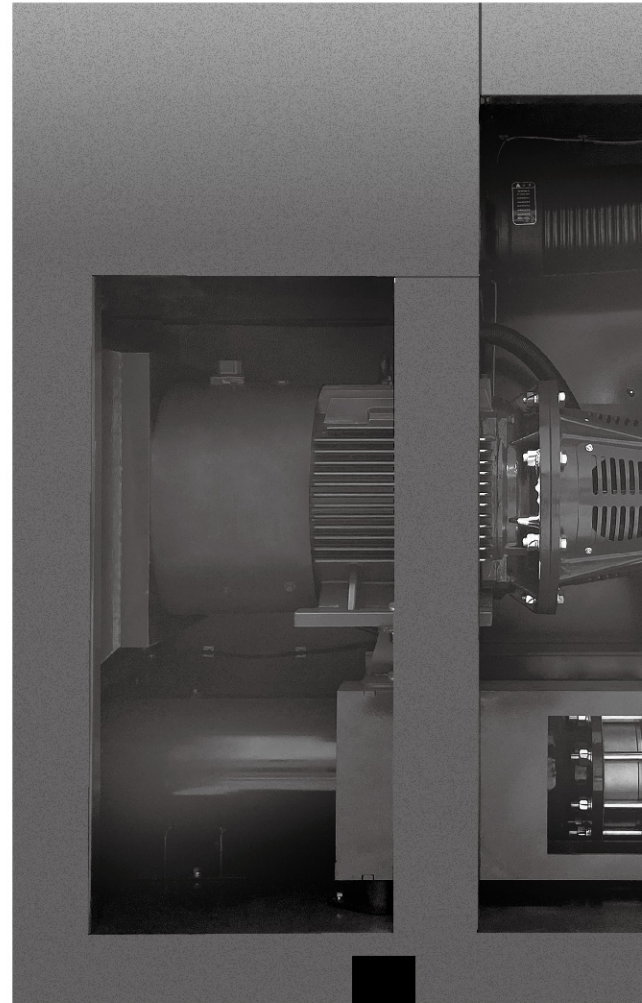
03

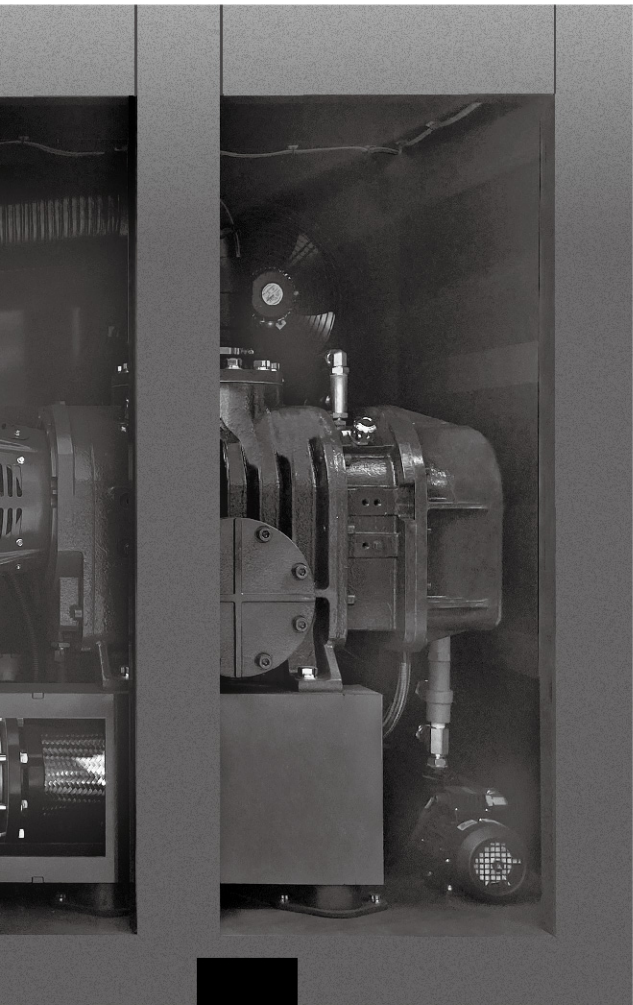
- Inlet and exhaust side silencer design, low running noise
- The air intake adopts a sound-absorbing design, which minimizes the noise at the air intake
- Using anti exhaust muffler structure, no resistance, good noise reduction effect



04

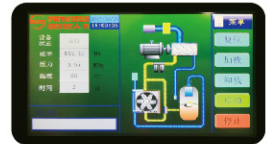
- VSD Control ,The vector inverter control system is used to precisely control the load according to the air demand and constant output pressure.
- VSD start, Low starting current, protecting electrical components





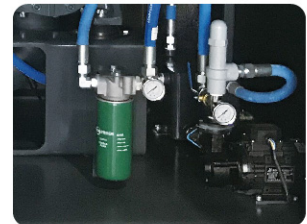
05

- Intelligent controller, touch screen, all operating information display, safe and intelligent, 24 hours unattended operation
- Industry 4.0 system, can view the operational status of equipment at any time on a mobile device or computer



06

Independent air end gear and bearing lubrication systems, double-pump design to ensure reliable long-term operation of the machine.



# Industry Customized - Oil Free Screw Blower Technical Parameters

Number	Model	Power (KW)	Working Pressure (bar)	Capacity (m <sup>3</sup> /min)	Outlet Size	Dimensions (mm)	Weight (KG)
1	SPVC-22A	22	0.4	23.0	DN150	2375*1175*1830	2000
2			0.6	18.0	DN150	2375*1175*1830	2000
3			0.8	14.5	DN150	2375*1175*1830	2000
4			1.0	11.0	DN150	2375*1175*1830	2000
5	SPVC-30A	30	0.4	28.5	DN150	2375*1175*1830	2300
6			0.6	25.0	DN150	2375*1175*1830	2300
7			0.8	22.0	DN150	2375*1175*1830	2300
8			1.0	16.0	DN150	2375*1175*1830	2300
9	SPVC-37A	37	0.4	39.0	DN150	2400*1350*1670	2600
10			0.6	32.0	DN150	2400*1350*1670	2600
11			0.8	25.0	DN150	2375*1175*1830	2600
12			1.0	22.0	DN150	2400*1350*1670	2600
13			1.2	18.5	DN150	2375*1175*1830	2600
14			1.5	15.0	DN150	2400*1350*1670	2600
15	SPVC-45A	45	0.4	47.0	DN150	2400*1350*1670	2800
16			0.6	37.5	DN150	2400*1350*1670	2800
17			0.8	32.0	DN150	2400*1350*1670	2800
18			1.0	26.5	DN150	2400*1350*1670	2800
19			1.2	22.0	DN150	2375*1175*1830	2800
20			1.5	17.0	DN150	2400*1350*1670	2800
21			2.0	10.5	DN150	2375*1175*1830	2800
22	SPVC-55A	55	0.4	61.0	DN200	3100*1610*2320	3300
23			0.6	51.5	DN150	2400*1350*1670	2900
24			0.8	42.0	DN150	2400*1350*1670	2900
25			1.0	36.0	DN150	2400*1350*1670	2900
26			1.2	30.0	DN150	2400*1350*1670	2900
27			1.5	25.0	DN150	2400*1350*1670	2900
28			2.0	13.9	DN150	2375*1175*1830	2850
29	SPVC-75A	75	0.4	78.0	DN300	3250*1860*2300	4000
30			0.6	67.0	DN200	3100*1610*2320	3300
31			0.8	58.0	DN200	3100*1610*2320	3300
32			1.0	50.0	DN200	2910*1675*2150	3300
33			1.2	42.0	DN200	2910*1675*2150	3300
34			1.5	32.0	DN150	2400*1350*1670	3000
35			2.0	21.9	DN150	2375*1175*1830	3000

Technical parameter may change without notice, please kindly understand that.

Number	Model	Power (KW)	Working Pressure (bar)	Capacity (m <sup>3</sup> /min)	Outlet Size	Dimensions (mm)	Weight (KG)
36	SPVC-90A	90	0.4	98.0	DN300	3250*1860*2300	4200
37			0.6	78.0	DN300	3250*1860*2300	4200
38			0.8	67.0	DN300	3250*1860*2300	4200
39			1.0	63.0	DN200	3100*1610*2320	3400
40			1.2	53.0	DN200	2910*1675*2150	3400
41			1.5	44.0	DN200	2910*1675*2150	3400
42			2.0	28	DN150	2400*1350*1670	3200
43	SPVC-110A	110	0.4	102.0	DN300	3250*1860*2300	4400
44			0.6	100.0	DN300	3250*1860*2300	4400
45			0.8	78.0	DN300	3250*1860*2300	4400
46			1.0	68.0	DN200	3100*1610*2320	3600
47			1.2	62.0	DN200	3100*1610*2320	3600
48			1.5	50.0	DN200	2910*1675*2150	3400
49			2.0	34.6	DN150	2400*1350*1670	3300
50	SPVC-132A	132	0.6	108.0	DN300	3250*1860*2300	4600
51			0.8	98.0	DN300	3250*1860*2300	4600
52			1.0	89.0	DN300	3250*1860*2300	4600
53			1.2	70.0	DN300	3250*1860*2300	4600
54			1.5	63.0	DN200	3100*1610*2320	3700
55			2.0	41.1	DN150	2400*1350*1670	3400
56	SPVC-160A	160	0.8	108.0	DN300	3250*1860*2300	4700
57			1.0	98.0	DN300	3250*1860*2300	4700
58			1.2	90.0	DN300	3250*1860*2300	4700
59			1.5	70.0	DN300	3250*1860*2300	4700
60	SPVC-185A	185	1.0	108.0	DN300	3250*1860*2300	5000
61			1.2	98.0	DN300	3250*1860*2300	4900
62			1.5	82.0	DN300	3250*1860*2300	4900
63	SPVC-200A	200	1.2	108.0	DN300	3250*1860*2300	5200
64			1.5	98.0	DN300	3250*1860*2300	5000
65			2.0	68.5	DN300	3250*1860*2300	5000
66	SPVC-220A	200	2.0	72	DN300	3250*1860*2300	5400
67	SPVC-250A	250	2.0	82	DN300	3250*1860*2300	5600

Technical parameter may change without notice, please kindly understand that.

